

**M.Plan, First year and 1<sup>st</sup> Semester (Integrated)- Academic year - 2018-19**

**Studio Name: Area Planning Studio**

**Introduction to the Problem:**

*Planning for development is an envisioning process which requires a sound assessment of the ground realities and providing options for sustainable development within the bounds of the demographic, physical, socio-economic, jurisdictional and financial aspects (URDPFI, 2015).*

There are various levels of planning which are listed in Table 1.

Table 1: Different levels of planning (Source: URDPFI, 2015)

<b>Planning system</b>	<b>Scope and purpose of the plan</b>	<b>Time frame*</b>
<b>Core area of planning</b>		
Perspective Plan	To develop vision and provide a policy framework for urban & regional development and further detailing	20-30 years
Regional Plan	To identify the region and regional resources for development within which settlement (urban and rural) plan to be prepared and regulated by DPC.	20years
Development Plan	To prepare a comprehensive Development Plan for urban areas, Peri-urban areas under control of Development authority/ Metropolitan Planning Committee.	20-30 years (Review every 5 years)
Local Area Plan	To detail the sub-city landuse plan and integration with urban infrastructure, mobility and services.	5-20 year (Review every 5 yrs)

**Brief:**

Area appreciation studies are done at the village, neighbourhood and sub-city levels to gain exposure on the socioeconomic, spatio-cultural, environmental characteristics and related issues. The emphasis would be on the preparation of plan through comprehensive surveys, observation studies, interviews and analysis. The end goal would be to plan for rational physical and socio-economic interventions for sustainable and harmonious development of the future.

Given the context, the studio exercise seeks to develop in students the skills needed by a spatial planner to critically assess the condition of a settlement and plan for it accordingly. There are two stages in this studio, the stage one addresses the Area planning and neighbourhood planning and the second stage focuses on Village Assessment Study.

## **Department of Planning, School of Planning and Architecture, Vijayawada**

**Context:** The region of **Bhimavaram town** in West Godavari district has been chosen for this exercise.

**Introduction to Bhimavaram:** Bhimavaram is a city in West Godavari district of the Andhra Pradesh state of India. It is the administrative headquarters of Bhimavaram mandal in Narasapuram revenue division. It is one of the major pilgrimage centers in the state, which is home to Somaramam, one of the five *Pancharama Kshetras*.

**Locational Characteristics and Regional Linkages:** Bhimavaram (16.543N 81.523E) is in the epicentre of the Godavari delta region. It is of almost 25 sq km area, with population 1.42 lakhs (2011 census). It is one of the principal trade centres of paddy in the state of Andhra Pradesh. Agriculture-based businesses like food processing, aqua culture, rice mills etc., are the chief sources of the town's revenue. It serves as a distribution centre as well as commercial centre to its hinterland. The town is the regional centre for higher education and is known for its specialized health services.

The academic exercise will be undertaken in three tasks—(1) Secondary Study through desktop literature, (2) Data Analysis (using primary and secondary data) and (3) Proposals and guidelines/recommendations.

Through desktop literature, the basic town planning theories, principles, governance and legal aspects will be provided. The students will be provided regional perspective of Bhimavaram and finally focusing them to area level study. An appreciation study of the areas will enable students to identify the issues and plan for it accordingly; the work culminating in the form of Area Planning. The outcome of this studio will be in the form of spatial plans, enabling students to develop their technical, analytical, decisive and spatial-planning skills.

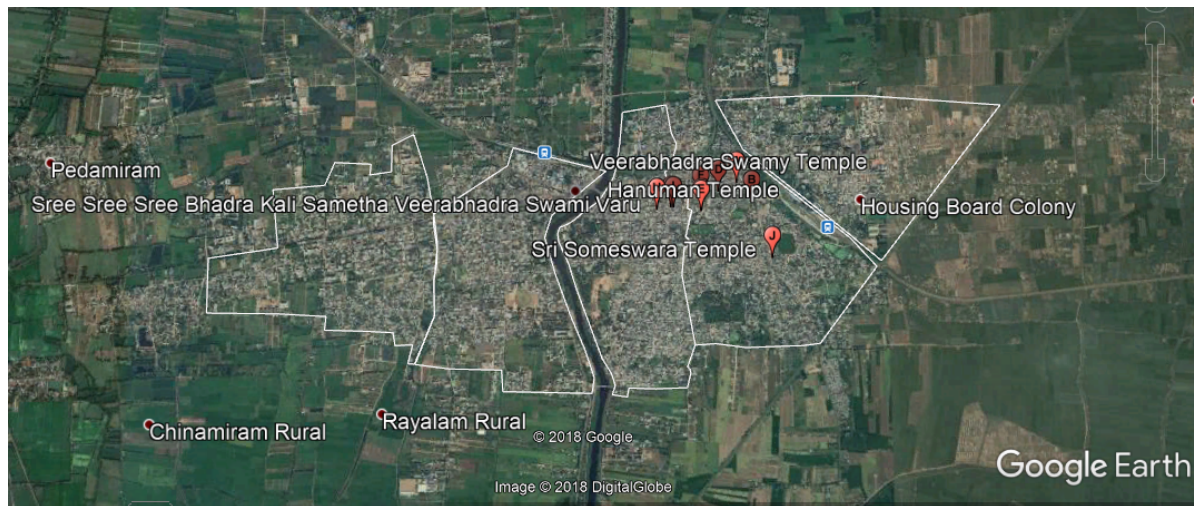
### **Stage 1:**

#### **Area and Neighbourhood Planning**

Five areas, approximately around 1.5sq km has been chosen within Bhimavaram town. Each area has its uniqueness, issues and potentials like traditional, industrial, educational, commercial, canal front development, agriculture centre and newly developed residential areas. The areas have been explored and chosen keeping in mind the mix of students from various backgrounds and provide basic town planning knowledge for pursuing the accepted post graduate specialization.

#### ***Identified Five Areas for Area and Neighbourhood Appreciation:***

The main part of the town has been divided into five tentative parts, each of about 1.5 sq km size, for the area-planning exercise. Each area will be pursued by two groups of 6 members each. The borders of the areas have been delineated by roads. The areas have been chosen such that each is of approximately equal size, two on the west of the canal and three on the east. Each area has a special neighbourhood, viz., from the west, the first area adjoins the peri-urban areas, the second has the bus stop and a university campus; the third is on the east side of the canal, the fourth area has the railway station and the ancient Somaramam temple, the farthest area from the canal on the east also has a substantial peri-urban region. Students may choose the unique neighbourhood and study it.



## **Stage 2:**

***Village Assessment Study in Bhimavaram Region:*** In the second stage the exercise will also focus on the neighbouring village areas of Bhimavaram region, namely, *Rayalam Rural, Narasimhapuram* and *Balusumoodi*, and how being just adjacent to peri-urban areas affects these localities.

Data will be collected on primary surveys, and subsequent analysed to gauge the situation in the region from various perspectives, to frame appropriate proposals and guidelines.

**Urban and Regional Planning Considerations:** It is the regional agro-based industrial centre. It is one of the chief centres of trade of paddy in the state. The city lies on the eastern and western sides of a canal, and one of the locations is the ancient Somaramam temple.

**Traffic and Transportation Planning Considerations:** Proximate to the Somarama temple, is the station. There is a bus terminal on the western side of the canal. NH 216 passes through the town. The Andhra Pradesh State Road Transport Corporation operates bus services from Bhimavaram bus station. Bhimavaram town railway station is classified as 'A-category' in the Vijayawada railway division of South Central Railway zone. The Gudivada–Bhimavaram section connects it with Visakhapatnam–Vijayawada section of Howrah–Chennai main line.

**Environmental Planning Considerations:** A canal runs right through the middle of the town. There are agro-based industries in the region also, coupled with the agricultural backdrop of the West Godavari District. These overlaps and intersections would be worth pursuing from an Environmental Planning point of view.

## **Studio Description and Calendar**

<b>Name of Course:</b>	<b>Area Planning Studio(MPIS101)</b>
Programme &Sem:	<b>Master of Planning (PG), Semester One</b>
Course Duration:	July 16 to Nov 14, 2018
Faculty Members:	Dr. S. Ramesh, Professor, Dept. of Planning (ramesh.srikonda@spav.ac.in)
Co-coordinators	Valliappan AL, Asst. Prof., Dept. of Planning (valliappan.al@spav.ac.in)
Course Coordinator:	Samya Rakshit, Asst. Prof., Dept. of Planning (samyarakshit@spav.ac.in)
Number of Credits:	12
Total Periods/Week:	15 (See Time Table for details)
Internal Assessment	200 (minimum pass marks 50%)
External Jury	200 (minimum pass marks 50%)
Total Marks	400 (to be converted to CGPA credit pattern as per regulations)

**Objective:** *To enable the students to understand the socio-economic and political context along with the land-use dynamics of the study area in relation to the village and the city. The focus of this studio will be to develop the students' skills in area appreciation and mapping techniques.*

<b>Week</b>	<b>Topic</b>
Week 1(starting August 01-03)	Introduction to the Problem
Week 2(starting August 06 - 10)	Literature study about emergence of town planning, theories, principles, typologies of plans and existing governance. Study about various relevant concepts and the town of Bhimavaram
Week 3(starting August 13-14)	Case Studies for both Area appreciation and Village Assessment study
Week 4 (starting August 16-21)	<b>1<sup>st</sup> Review</b>
Week 5 (August 24)	Working out Data-requirements in primary survey and review of standard processes in area planning
Week 6 (starting August 27-31)	Developing Questionnaire
Week 7 (starting Sep 03-07)	Field Work for both Area Appreciation and Village Assessment
Week 8 (starting Sep 10-14)	Compilation and Digitization of Data
Week 9 (starting Sep 17-21)	Data analysis and Framing requirements from the data analysis
Week 10 (starting Sep 24-28)	<b>2<sup>nd</sup> Review</b>
Week 11 (starting Oct 01-05)	Framing Proposals and Recommendations/guidelines
Week 12 (starting Oct 08-12)	<b>3<sup>rd</sup> Review for Area appreciation and study of village</b>

## Department of Planning, School of Planning and Architecture, Vijayawada

	<b>profile and assembling data for Village assessment</b>
Oct 15-19	Dussehra Break
Week 13 (starting Oct 22-26)	Data Analysis for Village Assessment
Week 14 (starting Oct 29-Nov 02)	Data analysis and Village profile Review
Week 15 (starting Nov 05-09)	Identification of Issues and short terms proposals and recommendations.
Week 16 (Nov 12-14)	<b>Final Review of Area Appreciation and Village Assessment Study</b>

### Note:

1. Any other closed holidays as declared by SPAV shall supercede the above lecture plan. Holidays shown above may alter as per Notice from time to time.
2. Review Sessions may be re-scheduled, with prior intimation.

### **Suggested Readings:**

1. Government of India (2015), Urban and Regional Development Plans Formulation and Implementation (URDPFI) Guidelines. Vol. 1, Town and Country Planning Organisation, Ministry of Urban Development, New Delhi.
2. Manitoba Intergovernmental Affairs and City of Winnipeg's Planning, Property and Development, Department of Planning and Land Use Division (2002), A Guide for Developing Neighbourhood Plan.
3. R.Thomas Russ (2009), Site Planning and Design Handbook. Mcgraw Hill Publications.
4. Singh.K (2009), Rural Development Principles, Policies and Management. Sage Publications, Pvt. Ltd, New Delhi.
5. Ministry of Environment (2016) Forestry and Climate Change (National Action Plan on Climate Change
6. Rangwala,(1977) Town Planning, Charotar.
7. ITPI Modern Town Planning Act
8. AP Govt. Order 119 and its applicability
9. Programs and Policies under the present Five Year Plan